

Vine Holter Monitor

Application guide

In this guide, you'll learn:

- Using the device
- Preparing the body and device
- Fitting the device
- Removing device and electrodes
- Marking symptomatic events
- Replacing the electrodes

We recommend that you read the instructions carefully before every test to ensure success.

The device is durable and simple to use, but should you encounter any difficulties or errors please contact us immediately.

Before you begin

Charge the device

Insert the device into the charging dock, and if placed a correctly:

- A blinking Green LED will indicate it is charging.
- A solid Green LED indicates the battery is full.

During the test

What to do during the test

Continue with daily routines as normal. Some slight skin irritation, itchiness or redness may occur. If this becomes unbearable, remove and seek medical advice.

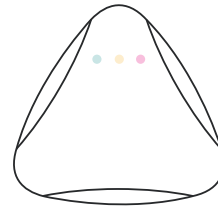
Recording events and symptoms

When experiencing symptoms during the test, simply double-tap the device to mark the event and then fill in the details of the event in the Patient Diary.

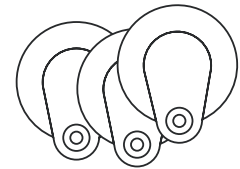
For more detailed instructions refer to the Guide "Using the device during the test"

Ensure you have the below

1 x Recording device

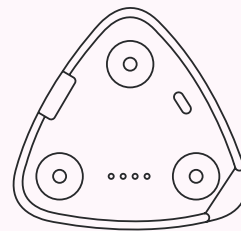


3 x Standard electrodes

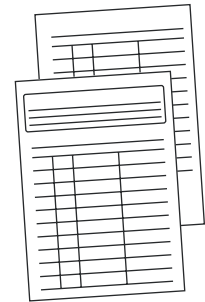


For staff use only

1 x Charging dock with Micro-USB cable



Patient symptom diary



⚠ While shower resistant, it is recommended to remove the device from the electrodes before showering. The electrodes should remain on the body and not reused once removed.

For technical support, you can find local contact details on our website.

cardioscan.co/contact

Continue to next page for fitting instructions

Fitting and activating the device

Before you begin

Ensure the following:

- Patient is confirmed to have no allergic reaction to the electrode adhesion
- Device is fully charged (see below)

1. Preparing the body and device

- Remove any chest hair then clean the area with soap and water. Allow skin to dry before application.
- Ensure that the battery is fully charged—the status display should show a solid Green LED.
- Remove the device from the charging dock, this will prompt an integrity check where all 3 status LEDs flash briefly.
- Attach all the electrodes to the metal anchor points on the back of the device.

2. Fitting the device

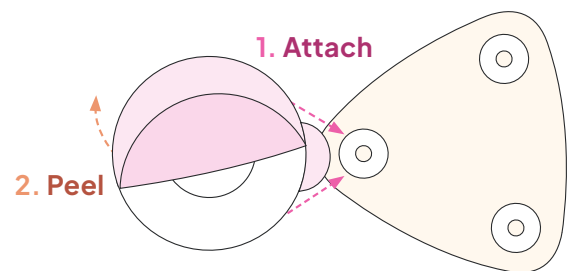
- Peel the protective backing from the electrodes.
- Carefully position and apply the device onto the chest as shown.
 - i** Practice placement before removing the plastic backing
- Ensure that the electrodes sit flush against the skin, avoiding curved areas where possible, while free from any creases or folds.
 - i** Avoid placing the electrodes directly on muscle tissue.

3. At the end of the test

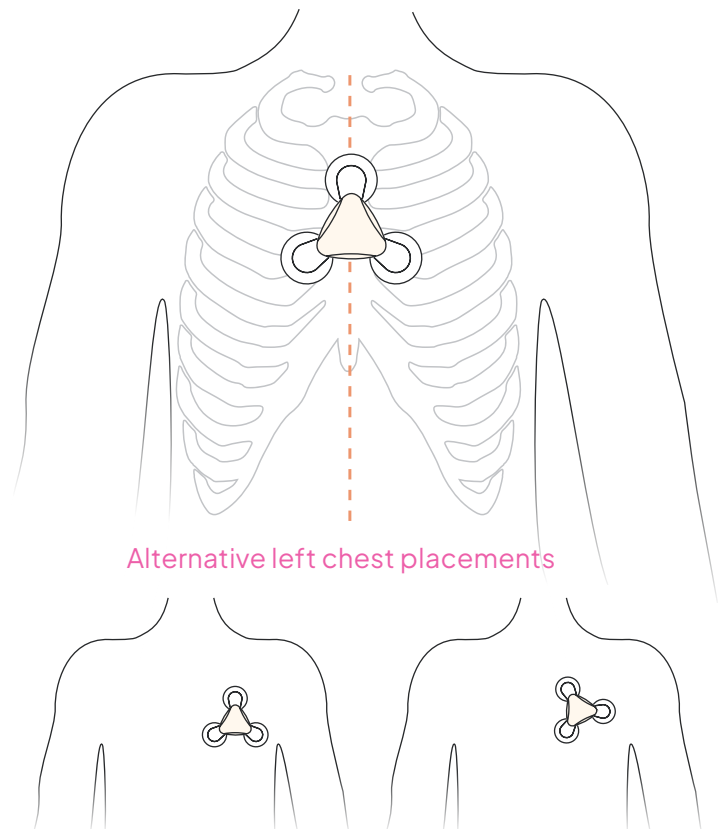
- When test is completed, remove the device from the electrodes and store with the charger.
- Carefully remove each electrode individually and dispose.

⚠ DO NOT remove the device and electrodes simultaneously as this may cause harm.

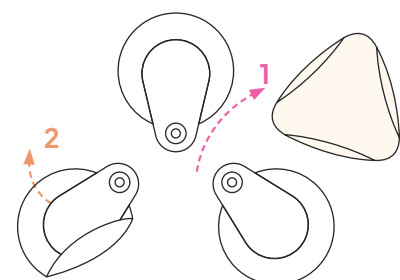
1 Attach device before peeling electrodes



2 Recommended Position and placement



3 Remove device first, then the electrodes



Using the device during the test

This document should be provided to the wearer

During the test

It is important to note:

- Continue daily routines as normal.
- Take short showers and pat the device dry. **DO NOT** bath or submerge device in water.
- Mild skin irritation or redness is normal, but try to avoid scratching.

⚠ If skin irritation becomes unbearable you should remove device first then the electrodes, and seek medical advice.

1. Recording an event

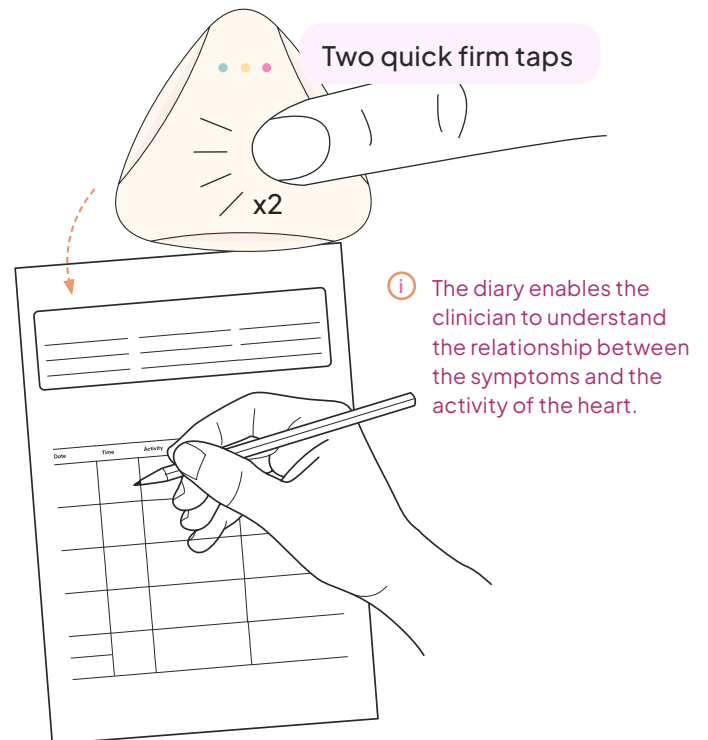
- To mark an event when experiencing symptoms, double-tap the recorder with quick firm taps.
- The LED lights will momentarily begin flashing to the wearers heart rhythm.
- An entry must then be made in the Symptom Diary.

2. Replacing the electrode and device

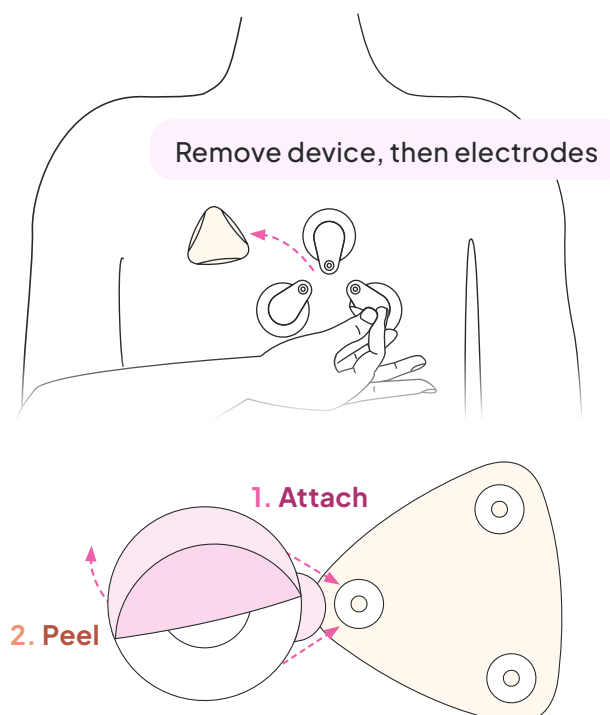
- Remove the device from the electrodes, and place safely nearby.
- Carefully remove each electrode individually and dispose.
- Attach new electrodes to the metal anchor points on the back of the device **before** peeling.
- Once all are attached, peel the protective backing from the electrodes.
 - ⓘ Practice placement before removing the plastic backing
- Carefully position and apply the device at the same location as before.
 - ⓘ Avoid placing the electrodes directly on muscle tissue.

⚠ **DO NOT** discard the Recording device. The data must be extracted to be analyzed before being reused.

1 Marking a symptomatic event



2 Replacing electrodes



→ **Need help?** Contact the prescribing physician for guidance about device use